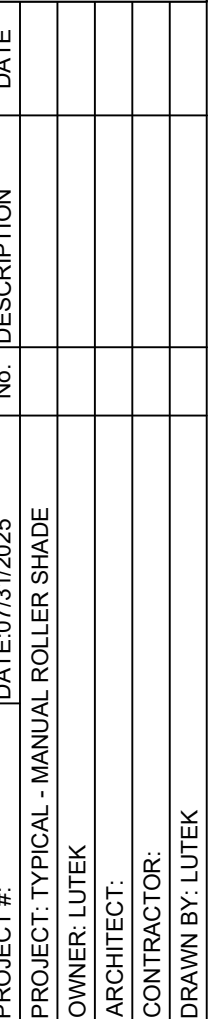


DESCRIPTION: BOTTOM-UP MANUAL ROLLER SHADE



These drawings represent Lu-Tek, Inc. interpretation information and the application of products provided by the architect. The sole purpose of these drawings is to provide the architect with the proper installation of window treatments. Ultimately the sole responsibility of verifying all the dimensions, quantities, size requirements, structural integrity and the compatibility of the window treatments is that of the architect. **It is equally important that the general contractor coordinate these drawings with all other architectural subcontractors, the architect of record and the engineer of record.**

These shop drawings must be approved by the architect and engineer prior to fabrication and installation.

© 2015 Lu-Tek, Inc.

The use of these documents and drawings shall be restricted to the original project for which they were prepared and no part of these documents and drawings are expressly limited to such project.

Re-use, reproduction or publication by any method, in any form, of these documents and drawings is prohibited. Title of these documents and drawings remain with Lu-Tek, Inc.

Lu-Tek, Inc. retains all federal, state and common law rights in and to these documents and drawings.

17-U.S. section 101 *et pass.*

SHEET No. **LT-13**