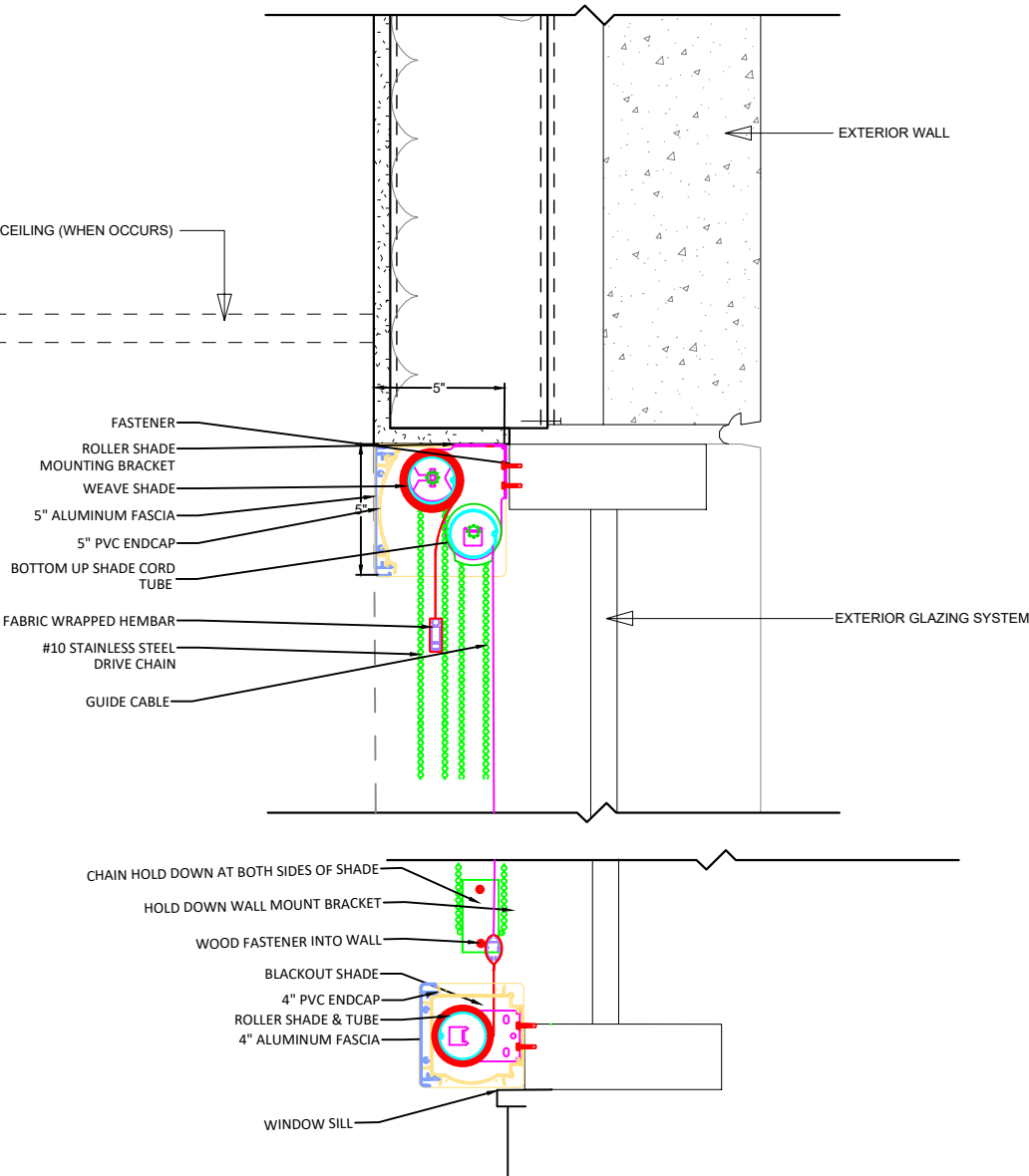


TYPICAL DETAILS

LUTEK PRODUCT NAME: HYBML-50

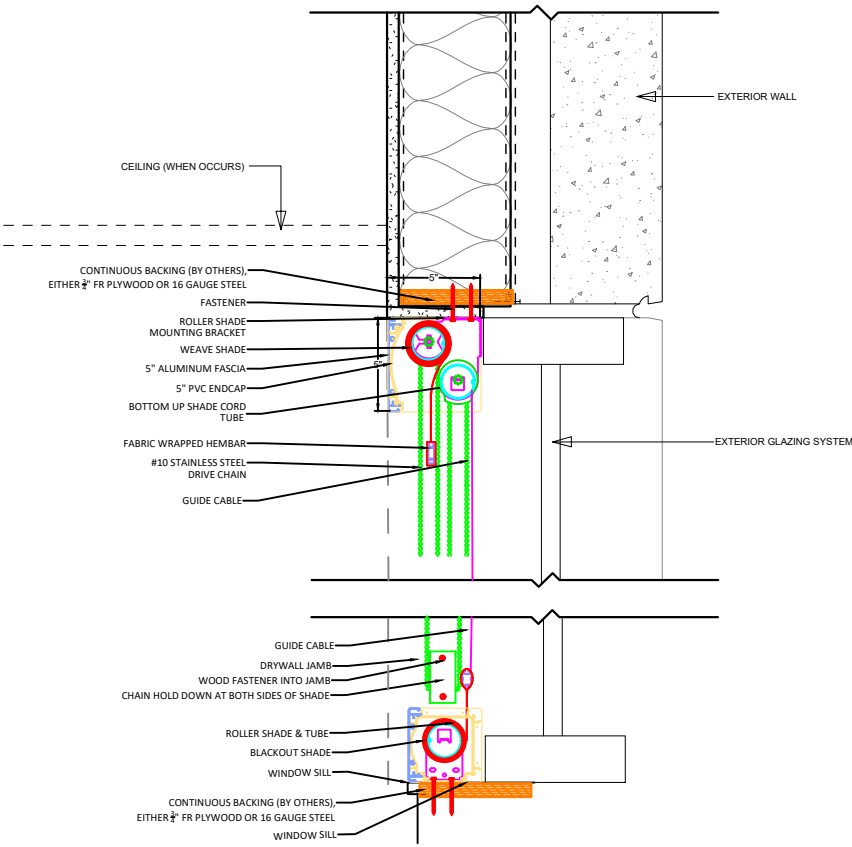
DESCRIPTION: BOTTOM-UP DUAL MANUAL ROLLER SHADE



1

BOTTOM-UP DUAL MANUAL ROLLER SHADE MULLION MOUNT/ TYPICAL

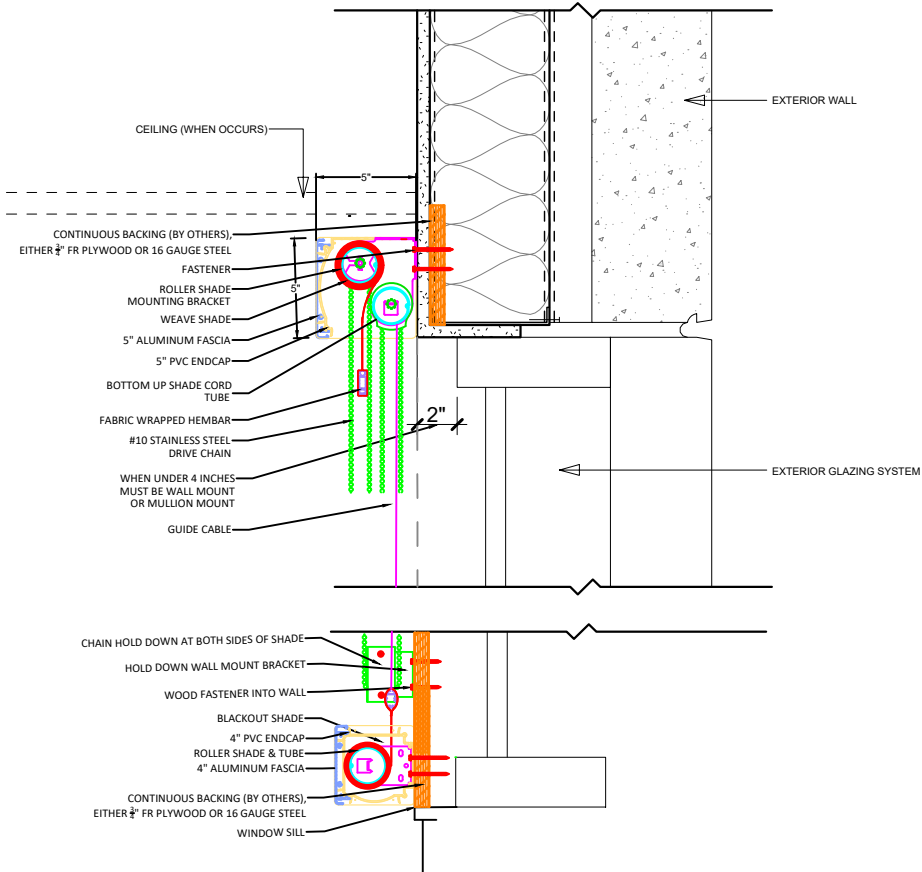
NOT TO SCALE



2

BOTTOM-UP DUAL MANUAL ROLLER SHADE INSIDE MOUNT/ TYPICAL

NOT TO SCALE



3

BOTTOM-UP DUAL MANUAL ROLLER SHADE OUTSIDE MOUNT/ TYPICAL

NOT TO SCALE



PROJECT #:	DATE:07/31/2025	No.	DESCRIPTION	DATE
PROJECT: TYPICAL - MANUAL ROLLER SHADE				
OWNER: LUTEK				
ARCHITECT:				
CONTRACTOR:				
DRAWN BY: LUTEK				

These drawings represent Lu-Tek, Inc. interpretation of information and the application of products provided by the architect. The sole purpose of these drawings is to assist Lu-Tek, Inc. in the fabrication and installation of the window treatments. Ultimately the sole responsibility of verifying all the dimensions, quantities, design requirements, structural integrity and the architectural intent of the window treatments is that of Lu-Tek, Inc. However, it is equally important that the general contractor coordinate these drawings with all other affected subcontractors, the architect of record and the engineer of record.

These shop drawings must be approved by the architect and engineer prior to fabrication and installation.

© 2015 Lu-Tek, Inc.
The use of these documents and drawings shall be restricted to the original project for which they were prepared and any publication of these documents and drawings are expressly limited to such project.

Re-use, reproduction or publication by any method, in whole or in part, of these documents and drawings is prohibited. Title of these documents and drawings remain with Lu-Tek, Inc.
Lu-Tek, Inc. retains all federal, state and common law copyright protections.
17 U.S.C. section 101 et seq.